

HUNT FRAME

ESTATE AGENTS



Courtlands Place 4-5 Wilmington Gardens

, Eastbourne, BN21 4FB

£1,195





**THIRD FLOOR
Flat 11**



Energy Efficiency Rating		Environmental Impact (CO ₂) Rating			
	Current	Potential		Current	Potential
Very energy efficient - lower running costs					
(92 plus) A			Very environmentally friendly - lower CO ₂ emissions		
(81-91) B			(92 plus) A		
(69-80) C			(81-91) B		
(55-68) D			(69-80) C		
(39-54) E			(55-68) D		
(21-38) F			(39-54) E		
(1-20) G			(21-38) F		
Not energy efficient - higher running costs					
Not environmentally friendly - higher CO ₂ emissions					
England & Wales		EU Directive 2002/91/EC		England & Wales	

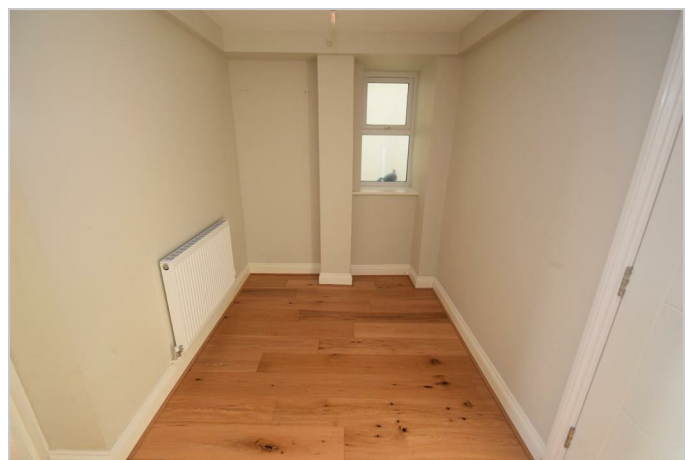
Viewing

Please contact us on 01323 737373 if you wish to arrange a viewing appointment for this property or require further information.

- THIRD FLOOR FLAT
- ADJACENT TO THEATRES AND SEAFRONT
- KITCHEN WITH INTEGRATED APPLIANCES
- TWO BEDROOMS
- AVAILABLE NOW
- PASSENGER LIFT
- MASTER BEDROOM WITH EN-SUITE SHOWER ROOM
- BALCONY
- ALLOCATED PARKING SPACE

A TWO BEDROOM, THIRD floor flat located adjacent to Eastbourne Theatres and seafront. Recently converted to a high specification, the accommodation comprises Lounge with BALCONY, kitchen with integrated appliances, MASTER BEDROOM WITH EN-SUITE, second bedroom and bathroom. Also benefitting from an ALLOCATED PARKING SPACE. Available now.

IF INTERESTED IN THIS PROPERTY, PLEASE CLICK ON 'EMAIL AGENT' OR 'REQUEST DETAILS' TO FILL OUT AN EMAIL CONTACT FORM TO BE GIVEN AN APPLICATION FORM TO COMPLETE. WE ARE UNABLE TO COMPLETE THESE OVER THE PHONE.



These particulars, whilst believed to be accurate are set out as a general outline only for guidance and do not constitute any part of an offer or contract. Intending purchasers should not rely on them as statements of representation of fact, but must satisfy themselves by inspection or otherwise as to their accuracy. No person in this firm's employment has the authority to make or give any representation or warranty in respect of the property.